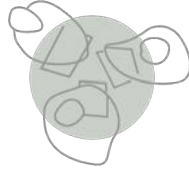


A modern office lounge with a wooden slatted ceiling, a large sunburst-shaped pendant light, blue modular sofas, pink ottomans, and a black metal shelving unit. A dog is sitting on the shelf. The floor is covered in a grey patterned carpet. Large windows are visible on the left side.

THE WORKSPACE CONSULTANTS



furniture

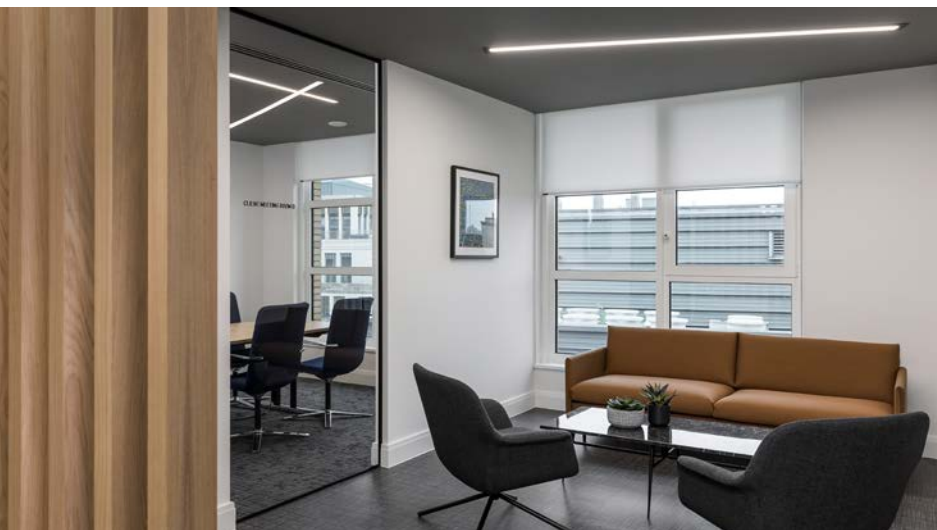
As a team, we have been involved in the office furniture sector for several years and there are not many manufacturers or UK suppliers that we have yet to hear about. We are well placed to help you through a potential mine field in variation of **quality, service levels and aftercare**. Whether as part of the design process or in a supporting role, we can advise you by presenting various products and by co-ordinating the overall specification.

We are always expanding our awareness of the office furniture sector and regularly update our knowledge base to reflect innovation, research and development. This includes understanding provenance, **sustainability, quality, and warranties**.

This brochure showcases projects where we have either been involved in the specification or supply of the furniture. It also provides further detail on 3 schemes by illustrating the type of information available from manufacturers.



grp
london





ICONS OF DENMARK FORM



ICONS OF DENMARK SMILE



SENATOR CIRCO

grp

furniture selection



ALLERMUIR FAMIGLIA



ISOMI FOLD



HUMANSCALE DIFFRIENT WORLD



TASK SYSTEMS WORK



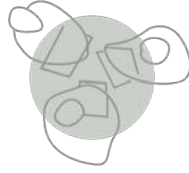
SENATOR MOTE



costello medical

cambridge, london & manchester





the journey

The journey usually begins with a the production of a scaled drawing, this **spaceplan** of your office will both ensure everything is going to fit and will support the implementation of the layout for various services as well as the installation. It may also include any existing furniture you wish to be re-purposed.

The next step is to produce a **quantified specification** and to **visit furniture showrooms** to look at product options. If we have been involved in the creation of the overall design we will already have a good understanding of the items required; if there is a concept we need to follow, we can choose items accordingly. We strongly believe that visiting furniture showrooms is the safest way to ensure a full understanding of what you are buying. On these visits we would expect to choose not only product but discuss **finishes** and **cost options** whilst referencing the space plan at all times.

Once the specification has been agreed we will either tender the selection or provide an open book quotation with a pre-agreed margin.

The **delivery and installation** will also be included, if we are supplying the furniture we will manage the installation through to completion including, where necessary, the relocation of any pre-existing furniture.

We will also hold a 10% retention until the project is complete.



veolia

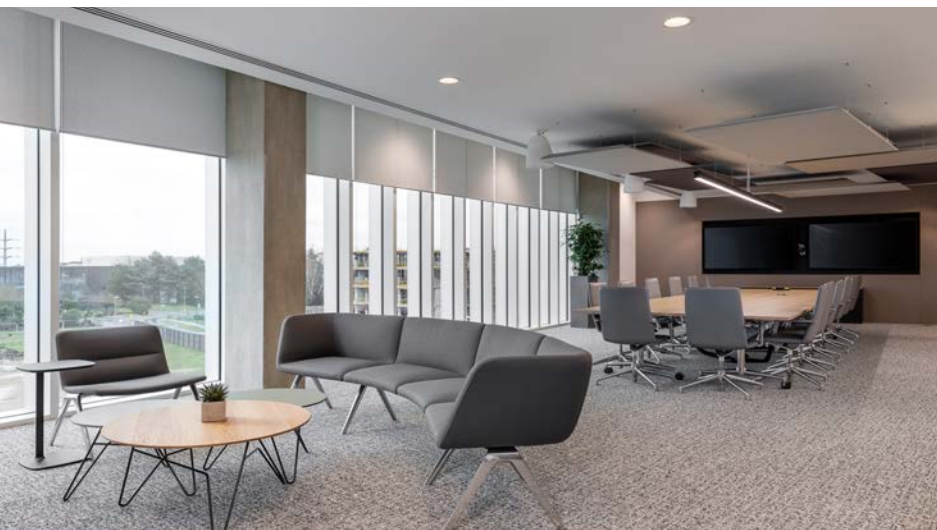
london





displaylink

cambridge





BRUNNER A BENCH



VITRA PETIT REPOS

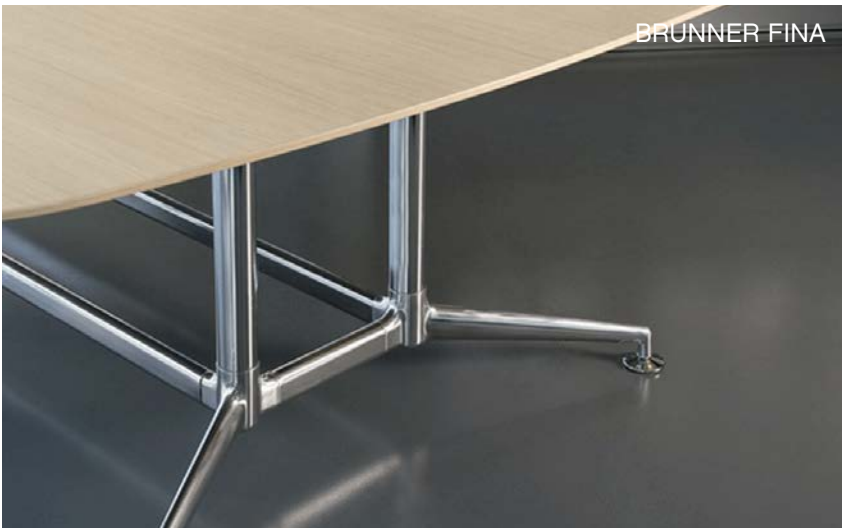


ICONS TWIST

displaylink furniture selection



VITRA DAR



BRUNNER FINA



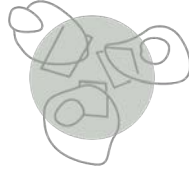
BRUNNER FINASOFT



ASSMANN CONVARO COMPACT

INTERSTHUL EVERY





procurement options

Our business model has historically been to provide our clients with independent advice and when we are engaged as designers or project managers we will discuss the options available to you.

We will use our experience to ensure that you achieve the best deal available by avoiding multiple supplier margins. We may suggest a fee based specification process with a budget, followed by a **competitive tender**, or, we may provide a **direct supply introduction** to a friendly manufacturer - in short we will always recommend the most cost effective route to procurement for our clients.

We are also sometimes asked if we can supply the furniture, the answer to this is yes, we can. We have access to a wide range of trusted furniture manufacturers and are happy to supply you with an **open book quotation** showing a pre-agreed margin. We feel that this sits well alongside our professional service offering as it provides parity with discounts expected during a robust tender.

It is always your choice as to which direction to take. The only thing we will say is that if we are managing a tender process for the furniture, we cannot be involved in its supply.



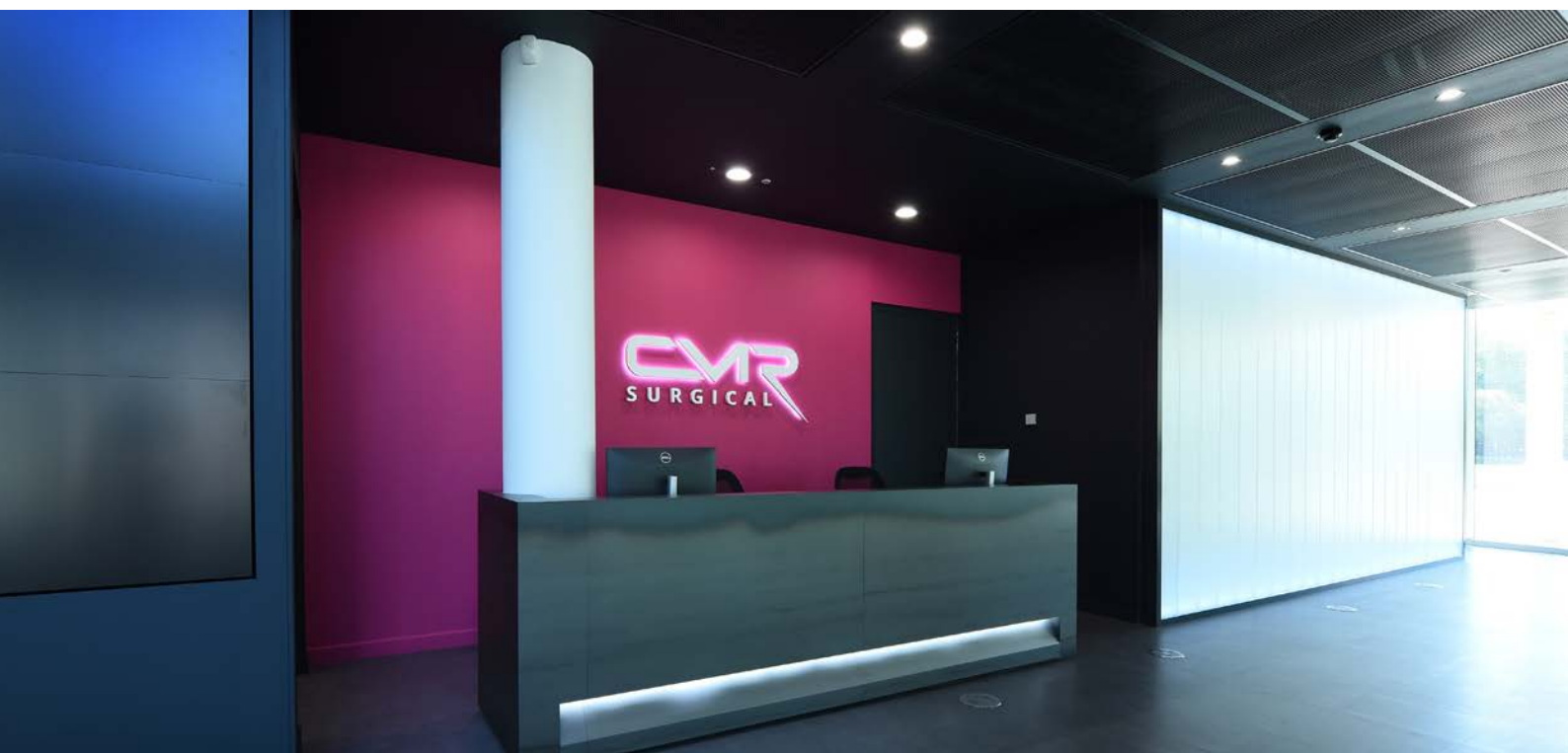
three crowns

london





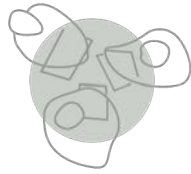
cmr
cambridge





cboe
london





furniture suppliers

abstracta

arper

assmann

bene

bisley

boss design

brunner

buzzispace

connection furniture

cmd

davision highley

framery

friends of wilson

frovi

isomi

hay

hitch mylius

humanscale

hush office

icf

icons of denmark

intersthul

isomi

jennifer newman

johanson

knoll international

mikomax

modus furniture

morgan furniture

muuto

ob&b

ocee design

office electrics

orangebox

orn

pedrali

sedus

senator

spacestor

task

walter knoll

wilkhahn



n g bailey

london





ORANGEBOX FIELDING



ORANGEBOX CUBB

DAVISON HIGHLEY SKYLON



n g bailey furniture selection



WILKHAHN OCCO



BRUNNER BANC SWIVEL



ARPER SEAN



KNOLL PILOT



geant
cambridge





THE WORKSPACE CONSULTANTS LLP

Cambridge

1 Avenue Business Park
Brockely Road
Elsworth
Cambridgeshire
CB23 4EY

London

1 Giltspur Street
London
EC1A 9DD

Manchester

Bloc 17
Marble Street
Manchester, M2 3AW

Tel +44 (0)1223 656111
info@theworkspaceconsultants.com
www.theworkspaceconsultants.com

April 2023